



Carret Kansas Tax-Exempt Bond Fund



Overview:
Quarter ending
December 31, 2021

Institutional Class

Ticker: SEKSX
CUSIP: 02110A522
Net Exp Ratio: 0.48%
Gross Exp Ratio: 0.57%
Inception Date: 12/10/1990

Retail - Class A

Ticker: IKSTX
CUSIP: 02110A530
Net Exp Ratio: 0.73%
Gross Exp Ratio: 0.86%
Inception Date: 12/10/1990

Fund AUM (All Classes)

\$186.4 Million

Firm AUM

\$3.413 Billion

Portfolio Managers

Neil D. Klein
212.207.2340
nklein@carret.com

Jason R. Graybill, CFA
212.207.2339
jgraybill@carret.com

Investment Objective & Strategy

The Carret Kansas Tax-Exempt Bond Fund (the "Fund") seeks to preserve capital while producing current income exempt from both federal and Kansas state income taxes. The Fund invests primarily in municipal bonds with maturities ranging from 1 to 20 years, and intends to maintain a weighted average maturity between 7 and 12 years. The Fund maintains a high-quality average credit rating.

Investment Philosophy

- Provide a tax-efficient investment solution
- Focus on total return & cash flow
- Study economic trends for market direction
- Anticipate and capitalize on change
- Sensitive to Kansas state and local tax issues

Investment Process

- Active investment process taking into account national and regional economic outputs, interest rate and credit trends, supply & demand flows, and relative market values & yields
- Thoughtful consideration of how coupon, duration, rating, and call features work together
- Sector analysis focusing on credits from the major sectors of the municipal bond market, including general obligation, school district, pre-refunded, and essential purpose bonds
- Monitor and maintain investment grade credit quality

Fund Characteristics (SEKSX)

- NAV (Institutional Class): \$11.11
- Subsidized 30-Day SEC Yield (Institutional Class): 0.55%
- Unsubsidized 30-Day SEC Yield (Institutional Class): 0.47%
- Number of Holdings: 192
- Avg. Price: \$112.68
- Avg. Coupon: 4.05%
- Duration to Maturity: 7.7 yrs / Duration to Call: 4.8 yrs
- Yield to Maturity: 2.06% / Yield to Call: 1.21%
- Taxable Equivalent YTM: 3.85% ⁽¹⁾
- Average Maturity: 9.4 yrs
- Average Rating: AA
- Income Subject to Alternative Minimum Tax: 0%

⁽¹⁾ Assumes 46.50% Combined Effective Tax Bracket

Firm Profile

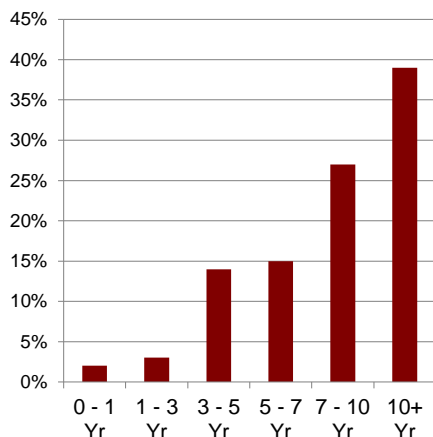
Founded in 1963 as an independent investment advisor, Carret serves wealth managers, financial advisors, select institutional clients, family offices, and high-net-worth individuals and families. Our goal is to achieve long-term, above-average, risk-adjusted results. Operating as a team, Carret's portfolio managers develop and implement the firm's investment process and strategy. Carret manages taxable fixed income, municipal fixed income, enhanced cash, fixed income opportunity, leveraged opportunity, large-cap equity, and custom balanced portfolios.

Carret is an independent firm with an entrepreneurial corporate culture. Carret's fixed income team averages more than 25 years in the investment management industry and has a vested interest in the success of each client portfolio.

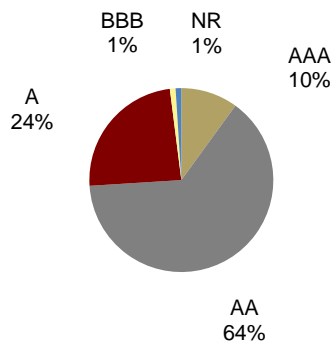
See important disclosures. Information is subject to change without notice

Carret Kansas Tax-Exempt Bond Fund

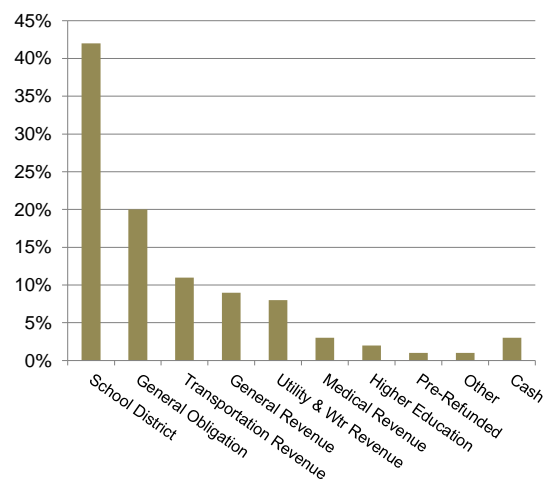
Maturity Distribution



Credit Rating*



Sector Allocation



Performance - Annualized Returns

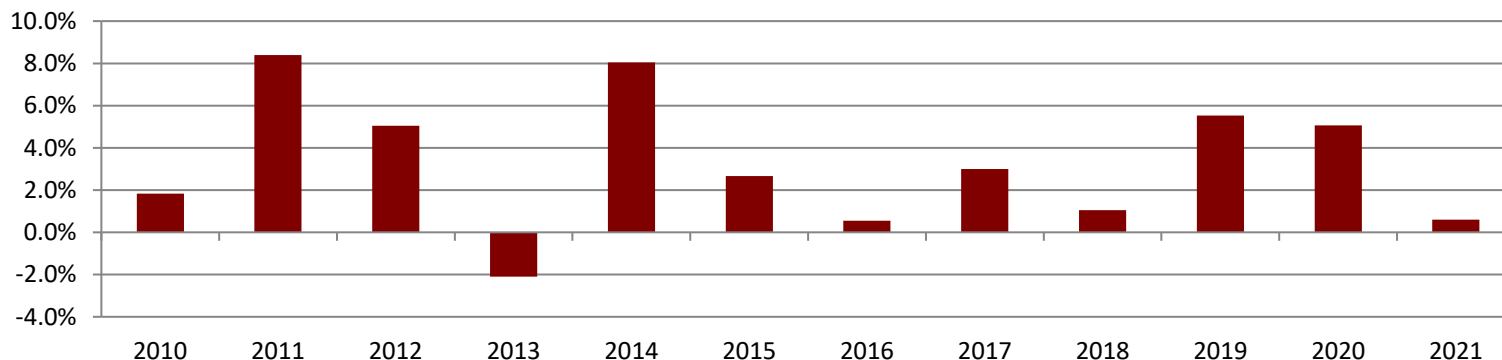
	4Q21	1 Yr	3 Yr	5 Yr	10 Yr
Carret Kansas Tax-Exempt Bond Fund - Institutional	0.60%	0.70%	3.75%	3.05%	2.92%
Carret Kansas Tax-Exempt Bond Fund - A [without sales charge]	0.54%	0.45%	3.49%	2.75%	2.56%
Carret Kansas Tax-Exempt Bond Fund - A [with sales charge]	-3.71%	-3.82%	2.01%	1.86%	2.12%
Lipper Other States Intermediate Muni ^a	0.42%	0.35%	3.36%	2.80%	2.36%
Barclays 7-Year Muni Bond Index ^b	0.20%	0.37%	4.03%	3.65%	3.01%

^a Supplemental Information - the Lipper Other States Intermediate Index added for comparative purposes.

^b Barclays 7-Year Municipal Bond Index reflects no deduction for fees, expenses, or taxes

Performance data quoted represents past performance. Past performance does not guarantee future results. Investment return and principal value will fluctuate so that an investor's shares, when redeemed, may be worth more or less than their original cost. Current performance may be lower or higher than the performance data quoted. To obtain performance information current to the most recent month-end, please visit www.carret.com or by contacting the Transfer Agent at 888-266-8787. Performance for A shares (w/load) reflects maximum sales charge of 4.25%. Performance for SEKSX (w/o load) does not reflect maximum sales charge of 4.25%. If reflected, the load would reduce

Calendar Year Returns - Institutional Class



*The Fund will invest in municipal bonds that are investment grade (rated Baa/BBB or better, as rated by a nationally recognized statistical rating organization, such as Moody's Investor Service Inc. ("Moody's"), Standard & Poor's Corporation ("S&P"), or Fitch Ratings Ltd. ("Fitch").

Ratings shown are the highest rating given by one of the following national rating agencies: S&P, Moody's or Fitch. Additional information about ratings can be found, respectively, at https://www.standardandpoors.com/en_US/web/guest/home, <https://www.moodys.com/> and <https://www.fitchratings.com/>.

Credit ratings are subject to change. AAA, AA, A, and BBB are investment grade ratings categories used by S&P and Fitch; BB, B, CCC/CC/C and D are below investment grade ratings categories used by S&P and Fitch. Aaa, Aa, A and Baa are investment grade ratings categories used by Moody's; Ba, B, Caa/Ca and C are below investment grade ratings categories used by Moody's. Bonds backed by U.S. Government or agency securities are given an implied rating equal to the rating of such securities. Holdings designated Not Publicly Rated are not rated by these national rating agencies.

See important disclosures. Information is subject to change without notice.

Carret Kansas Tax-Exempt Bond Fund

Important Disclosures

Investing in the Funds involves risk including the loss of principal. Investments in fixed income securities are subject to the risks associated with debt securities including credit, price, and interest rate risk. Stock and bond values fluctuate in price so the value of your investment can go down depending on market conditions. There is no assurance that the Funds will achieve their objectives.

Mutual funds, annuities, and other investments are not insured or guaranteed by the FDIC or by any other government agency or government sponsored agency of the federal government or any state, not deposits, obligations, or guaranteed by any bank or its affiliates and are subject to investment risks, including possible loss of the principal amount invested.

Fixed-Income Securities Risk. Fixed-income securities are subject to the risk of the issuer's inability to meet principal and interest payments on its obligations (i.e., credit risk) and are subject to price volatility resulting from, among other things, interest rate sensitivity, market perception of the creditworthiness of the issuer and general market liquidity (i.e., market risk). Generally, fixed-income securities will decrease in value if interest rates rise and will increase in value if interest rates decline. Securities with longer durations are likely to be more sensitive to changes in interest rates, generally making them more volatile than securities with shorter durations. Lower rated fixed-income securities have greater volatility because there is less certainty that principal and interest payments will be made as scheduled. **Municipal Securities Risk.** Municipal securities may be general obligations or revenue bonds. General obligation bonds are secured by the issuer's full faith and credit as well as its taxing power for payment of principal or interest. Revenue bonds are payable solely from the revenues derived from a specified revenue source. These bonds involve the risk that the revenues so derived will not be sufficient to meet interest and/or principal payment obligations. Municipal securities involve the risk that an issuer may call securities for redemption, which could force the Fund to reinvest the proceeds at a lower rate of interest. **Credit Risk.** The issuer of a fixed income security may not be able to make interest and principal payments when due. Generally, the lower the credit rating of a security, the greater the risk that the issuer will default on its obligation which could result in a loss to the Fund. **High-Yield Securities Risk.** Lower rated securities are subject to greater risk of loss of income and principal than higher rated securities and may have a higher incidence of default than higher-rated securities. The prices of lower rated securities are likely to be more sensitive to adverse economic changes or individual corporate developments than higher rated securities. **Interest Rate and Duration Risk.** The Fund's share price and total return will vary in response to changes in interest rates. If rates increase, the value of the Fund's investments generally will decline, as will the value of your investment in the Fund. Longer-term securities are subject to greater interest rate risk. Duration is a measure of the sensitivity of a security's price to changes in interest rates. The longer a security's duration, the more sensitive it will be to changes in interest rates. Similarly, a fund with a longer average fund duration will be more sensitive to changes in interest rates and will experience more price volatility than a fund with a shorter average fund duration.

Some income may be subject to state and local taxes and to the federal alternative minimum tax. Capital gains, if any, are subject to tax.

Glossary of Terms

Coupon is the rate of interest, payable annually.

Yield to Maturity is calculated by assuming that interest payments will be made until the final maturity date, at which point the principal will be repaid by the issuer. Yield to maturity is essentially the discount rate at which the present value of future payments (investment income and return of principal) equals the price of the security.

Call features exists when/if a bond is subject to payment of the principal amount (and accrued interest) prior to the stated maturity date, with or without payment of a call premium. Bonds can be callable under several different circumstances, including at the option of the issuer, or on a mandatory or extraordinary basis.

Average Maturity is the weighted average of the effective maturity dates of the fixed-income securities in the Fund's holdings. A bond's effective maturity takes into account the possibility that it may be called by the issuer before its stated maturity date. In this case, the bond trades as though it had a shorter maturity than its stated maturity.

Duration is a measure of the responsiveness of a bond's price to interest rate changes for bonds with an embedded option.

SEC 30-day Yield represents the yield that must be earned on a fully taxable investment to equal the yield of the Fund on an after-tax basis at a specified tax rate. If the comparison were instead to investments that generate qualified dividend income, which is taxable at a rate lower than an individual's ordinary graduated tax rate, the Fund's Taxable-Equivalent yield would be lower. The Taxable-equivalent yield is computed under an SEC standardized formula and is based on the maximum offer price per share.

Taxable-Equivalent Yield is the pretax yield that a taxable bond needs for its yield to equal that of a tax-free municipal bond. The Taxable Equivalent Yield is calculated using a 46.50% Combined Federal, Kansas State, and Medicare Surcharge Tax Rate. Investors should consider their own tax rate when investing in municipal bonds. The Fund commenced upon the reorganization of an identically named series of American Independence Funds Trust ("Predecessor Fund") into the Fund effective as of September 24, 2018. With the reorganization, the Fund assumed the financial and performance history of the Predecessor Fund. **For a complete list of fund risks, please see the prospectuses.**

For more complete information on the Carret Kansas Tax Exempt Bond Fund, an investor can obtain a prospectus containing complete information for the Funds by calling 888.266.8787 or by downloading it from Carret's web site www.carret.com/documents/Carret_Prospectus_2021.pdf. An investor should consider the Fund's investment objectives, risks, charges, and expenses carefully before investing. Information about these and other important subjects is in the Funds' prospectus. The prospectus and, if available, the summary prospectus, should be read carefully before investing.

Shares of the Carret Kansas Tax Exempt Bond Fund are distributed by ALPS Distributors, Inc., which is not affiliated with Carret Asset Management, LLC.